

# PA Stormwater Program

- Stormwater Management Act (Act 167)
- Small municipal separate stormwater systems (MS4 - PAG-13)
- NPDES Construction and Chapter 102 Erosion and Sediment Control (E&S)
  - 2010 Chapter 102 E&S revisions
- Industrial, CAFOs, Agriculture



# PA Act 167

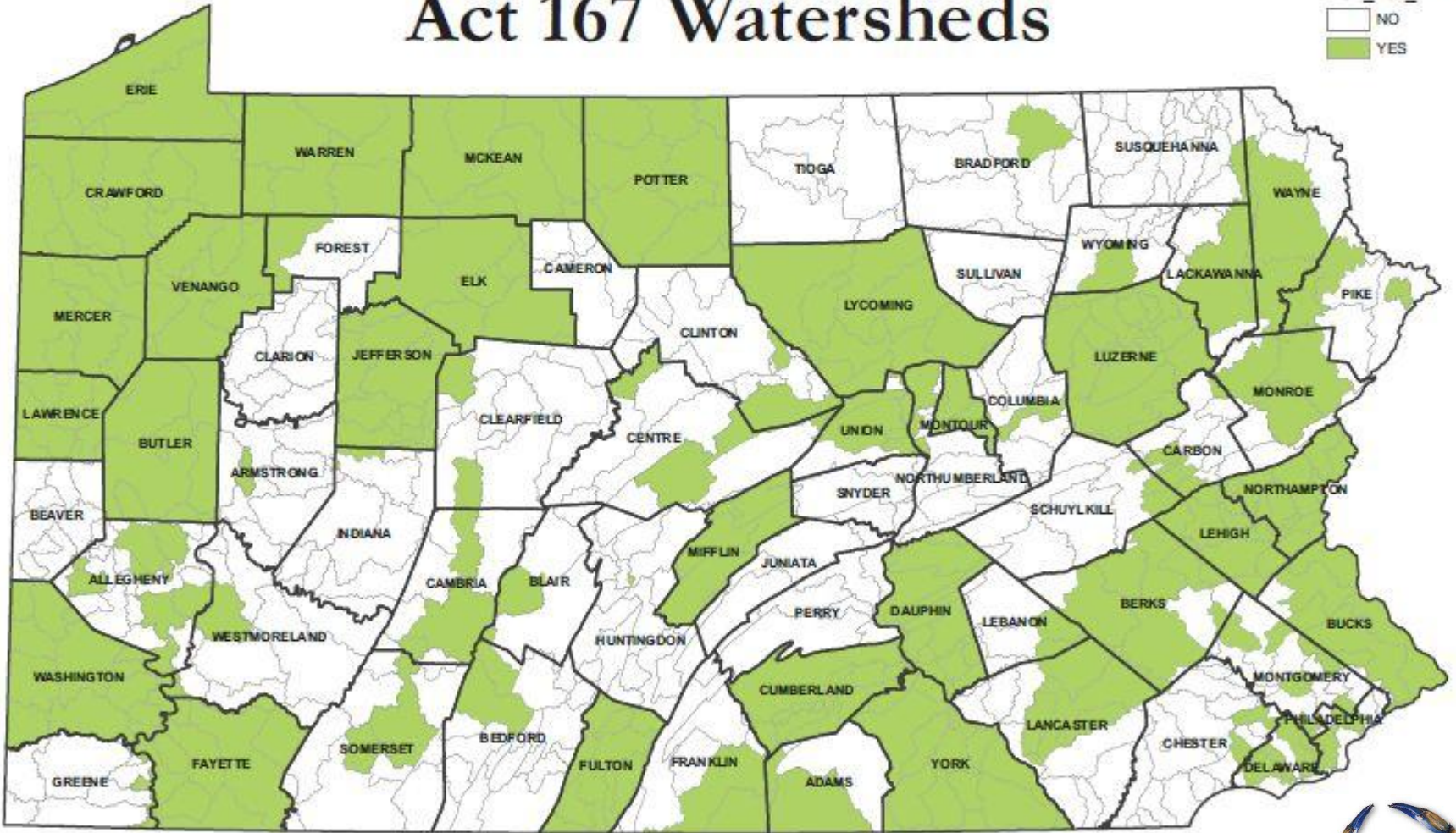
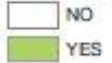
- Enacted in 1978
- Requires counties to plan and adopt watershed-based SW mgmt plans
- Requires municipalities to adopt and implement ordinances
- Goal -- control post-development stormwater runoff rate, volume and quality to replicate pre-development conditions.



# Act 167 Watersheds

Legend

ACT\_167\_PLAN



as of May 12, 2011

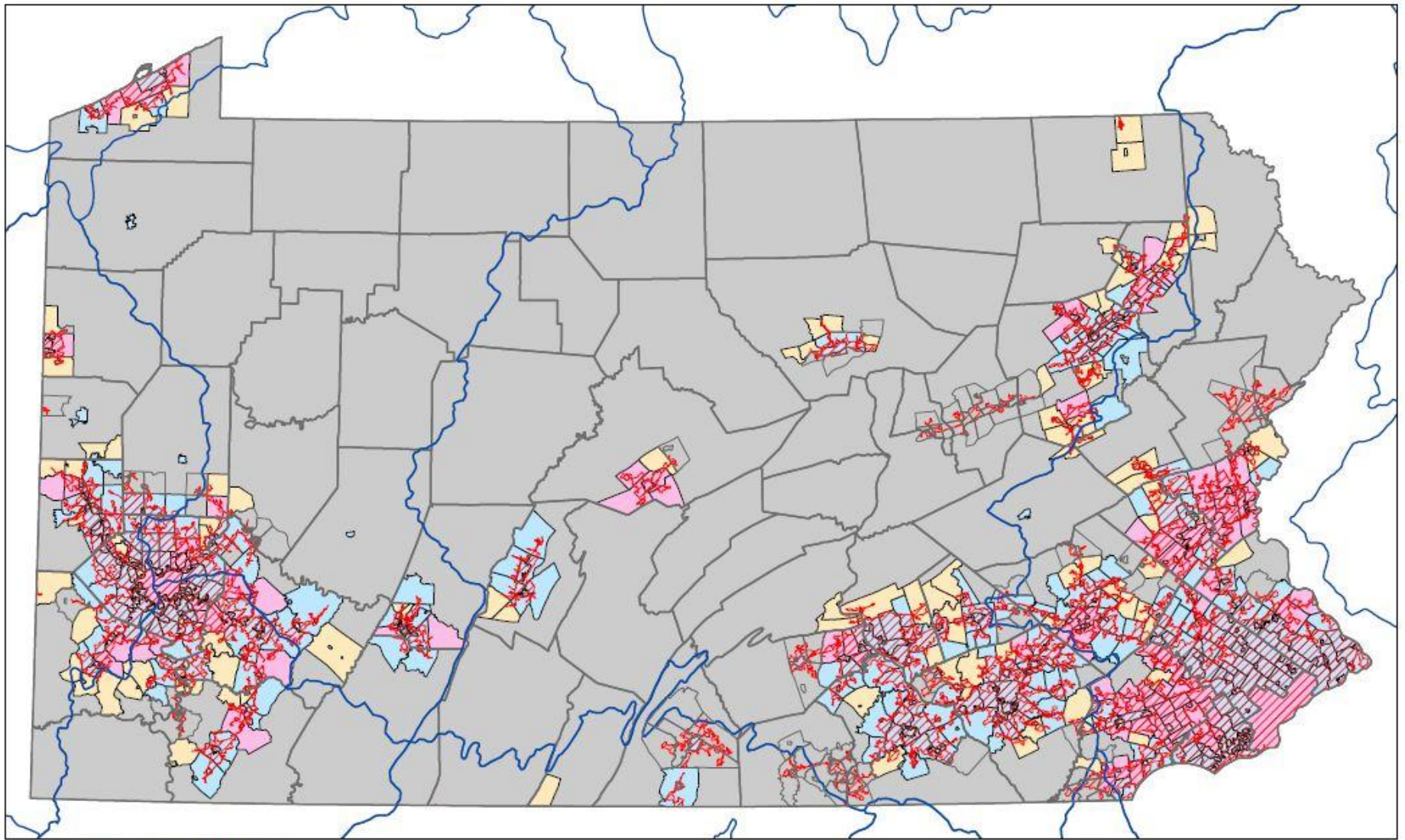


# PA MS4 Program

- Close to 1,000 communities are considered statewide
- 206 in the Chesapeake Bay Watershed
- New requirements
  - Bay pollutant reduction plans
  - TMDL implementation plans

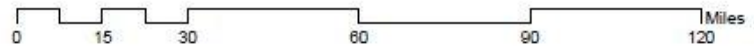






**MS4 Municipalities / 2010 Urbanized Area**

- Permit Status as of May 2012
- General
  - Individual
  - Waiver
  - Municipalities
  - County Boundaries
  - Major Watershed Boundary
  - 2010 Urbanized Area



# PA MS4 Program

- Minimum Control Measures (MCMs)
  - Public education and outreach
  - Public involvement and participation
  - Illicit discharge detection and elimination
  - Construction site runoff control
  - Post-construction stormwater management in new development and redevelopment
  - Pollution prevention and good housekeeping for municipal operations and maintenance



# NPDES Construction and Chapter 102 E&S

- Covers earth disturbance activities
  - Develop, implement and maintain BMPs
  - Manage post construction stormwater
- Threshold - equal to or greater than 1 acre



# PA Chapter 102 - E&S

- Recent revisions (2010)
  - Added post construction stormwater management requirements (with long-term O&M)
  - Riparian buffers (required and voluntary)
  - Updates for agricultural planning and implementation requirements
  - And several other provisions.....

